



CLEVELAND-CLIFFS INC.
Cleveland-Cliffs Burns Harbor LLC
250 West U.S. Highway 12, Burns Harbor, IN 46304
P 219.787.2120 | clevelandcliffs.com

VIA Electronic Mail

IDEM Office of Water Quality
Indiana Department of Environmental Management
100 North Senate Avenue
Indianapolis, IN 46204-2251

August 15, 2023

Subject: Environmentally-Beneficial Project
Cleveland-Cliffs Burns Harbor
USDC IN/ND case 2:22-cv-00026-PPS-JEM

As laid out in the May 6, 2022 Consent Decree, Cleveland-Cliffs Burns Harbor has conducted weekly sampling to monitor and report on water quality in the East Branch of the Little Calumet River and Lake Michigan for a Environmentally-Beneficial Project. This report contains the July 2023 sampling results.

We trust that the above adequately responds to the reference. If there are any questions concerning these matters, please contact Morgan Swanson at 219-787-2646.

Sincerely,

A handwritten signature in black ink that reads "Thomas Maicher".

Thomas Maicher
Area Manager, Environmental
Cleveland-Cliffs Burns Harbor LLC

Environmentally-Beneficial Project Sampling Data Summary**Cleveland-Cliffs Burns Harbor Intake**

	Temperature (°F)	pH (s.u.)	Ammonia (mg/L)	Free Cyanide (µg/L)
7/4/2023	69.0	8.0	0.0349	Non-Detect
7/12/2023	70.5	7.9	0.39	Non-Detect
7/19/2023	71.6	8.0	0.0186	Non-Detect
7/26/2023	66.2	7.9	0.0123	Non-Detect

East Branch Little Calumet River at Howe Road

	Temperature (°F)	pH (s.u.)	Ammonia (mg/L)	Free Cyanide (µg/L)
7/4/2023	73.0	7.8	0.114	Non-Detect
7/12/2023	73.5	8.0	0.0153	Non-Detect
7/19/2023	72.8	8.0	0.27	Non-Detect
7/26/2023	74.3	7.8	0.0325	Non-Detect

East Branch Little Calumet River at Crisman Road

	Temperature (°F)	pH (s.u.)	Ammonia (mg/L)	Free Cyanide (µg/L)
7/4/2023	78.0	8.2	0.118	Non-Detect
7/12/2023	75.0	7.9	0.106	Non-Detect
7/19/2023	73.0	7.9	0.0561	Non-Detect
7/26/2023	77.1	7.8	0.147	Non-Detect

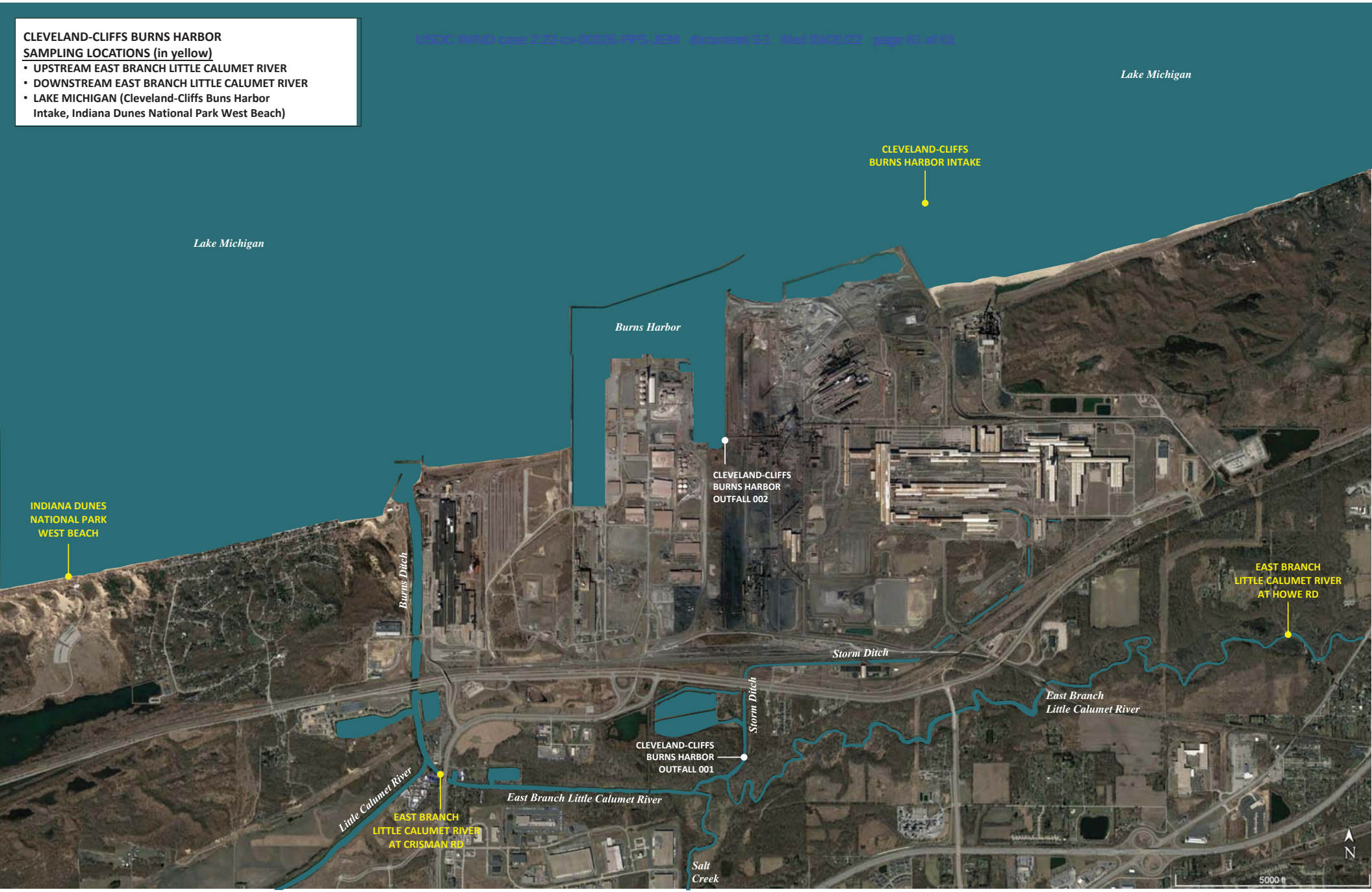
Indiana Dunes National Park West Beach

	Temperature (°F)	pH (s.u.)	Ammonia (mg/L)	Free Cyanide (µg/L)
7/4/2023	74.0	7.9	0.0317	Non-Detect
7/12/2023	70.1	8.1	Non-Detect	Non-Detect
7/19/2023	71.6	8.2	Non-Detect	Non-Detect
7/26/2023	72.6	7.9	0.0411	Non-Detect

CLEVELAND-CLIFFS BURNS HARBOR

SAMPLING LOCATIONS (in yellow)

- UPSTREAM EAST BRANCH LITTLE CALUMET RIVER
- DOWNSTREAM EAST BRANCH LITTLE CALUMET RIVER
- LAKE MICHIGAN (Cleveland-Cliffs Burns Harbor Intake, Indiana Dunes National Park West Beach)



Lake Michigan

Lake Michigan

Burns Harbor

CLEVELAND-CLIFFS
BURNS HARBOR INTAKE

INDIANA DUNES
NATIONAL PARK
WEST BEACH

CLEVELAND-CLIFFS
BURNS HARBOR
OUTFALL 002

EAST BRANCH
LITTLE CALUMET RIVER
AT HOWE RD

Burns Ditch

Storm Ditch

East Branch
Little Calumet River

CLEVELAND-CLIFFS
BURNS HARBOR
OUTFALL 001

EAST BRANCH
LITTLE CALUMET RIVER
AT CRISMAN RD

East Branch Little Calumet River

Salt
Creek

5000 ft

