

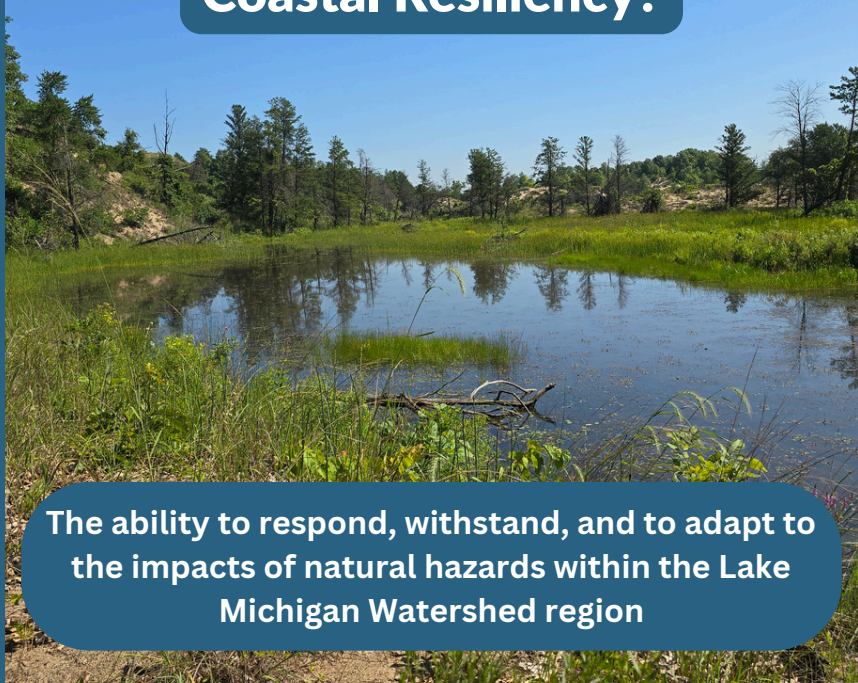
COASTAL RESILIENCY

You Live in a Coastal Community!

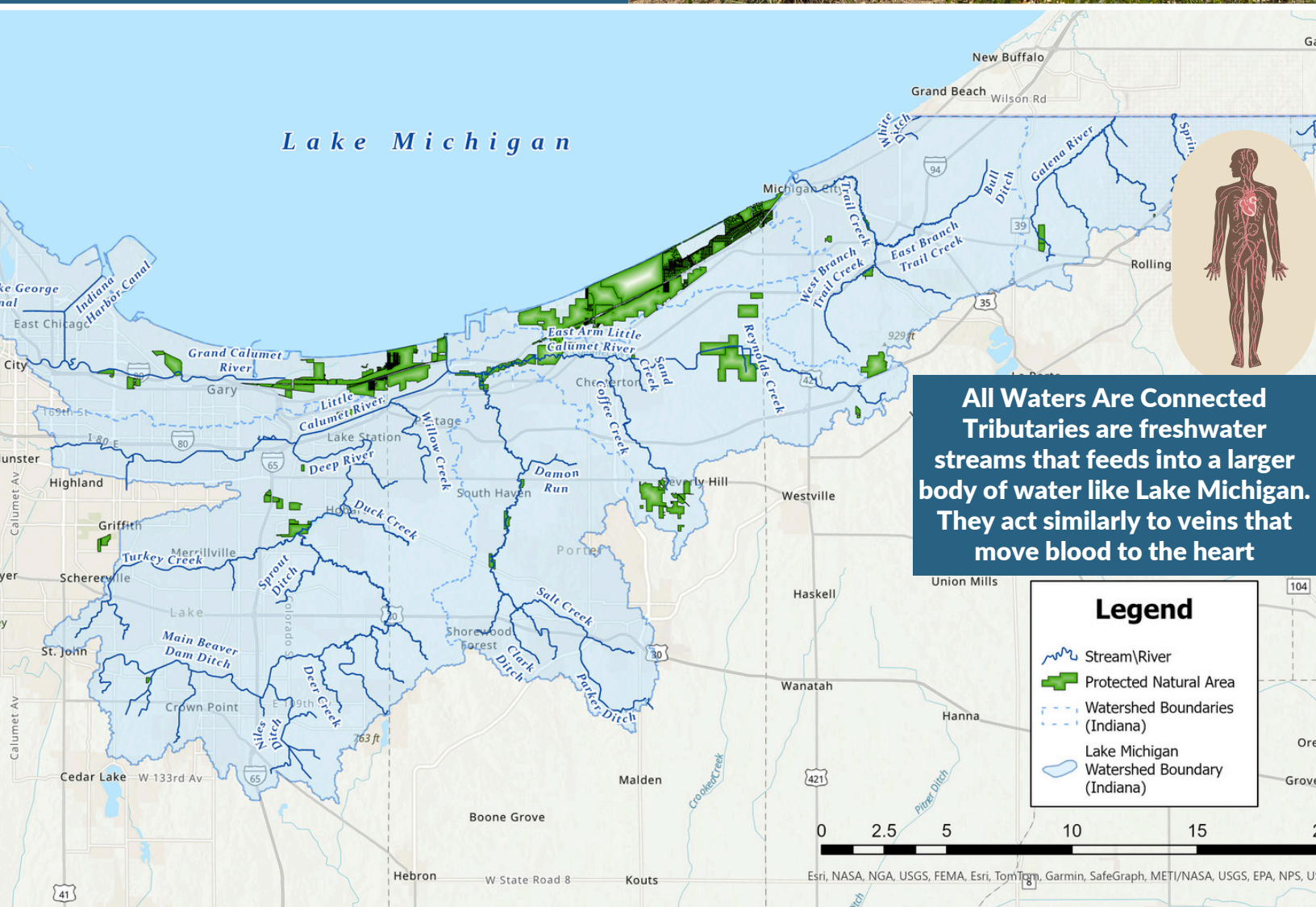


- The Lake Michigan Watershed includes all the areas in blue in the map below
- This includes not only the communities near Lake Michigan, but also any communities near the tributaries that connect to the lake
- “Coastal” does not mean shoreline communities only, it includes the entire watershed

What Do We Mean By Coastal Resiliency?



The ability to respond, withstand, and to adapt to the impacts of natural hazards within the Lake Michigan Watershed region



Goals of Coastal Resiliency

- Decreased flooding



- Healthier Ecosystems



- Balance between Humans and Nature



How Can You Help?

- Preserve or create wetlands on your property
 - Plant a rain garden
 - Become a wetlands advocate!
 - Plant native trees!
-
- Remove invasive species on your property
 - Choose native plants for your garden!
 - Stay on designated paths
 - Don't apply chemicals in your lawn
 - Replace turf grass with native plants to slow the flow of water
-
- Identify your individual impact and leave no trace
 - Be a natural steward at home and natural spaces



Stay connected
with Save the
Dunes by visiting
our website at
savedunes.org!

If You Would Like to Learn More

Check out our other Coastal Resiliency Factsheets on the following topics:

- Wetlands
- Shoreline Erosion
- Recreating Responsibly
- Protecting Biodiversity
- Living in the Dunes



What Does Save the Dunes Do?

Save the Dunes protects and advocates for the Indiana Dunes, Lake Michigan, and the surrounding natural areas for the health and vitality of the environment and the people who live, work, and recreate in Northwest Indiana

